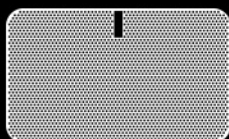


## Product Guide

# SONOS



**PLAY:5**  
(gen 2)

THIS DOCUMENT CONTAINS INFORMATION THAT IS SUBJECT TO CHANGE WITHOUT NOTICE.

No part of this publication may be reproduced or transmitted in any form or by any means, electronic or mechanical, including but not limited to photocopying, recording, information retrieval systems, or computer network without the written permission of Sonos, Inc. Sonos and all other Sonos product names and slogans are trademarks or registered trademarks of Sonos, Inc. Sonos Reg. U.S. Pat. & Tm. Off.

Sonos products may be protected by one or more patents. Our patent-to-product information can be found here:

**[sonos.com/legal/patents](http://sonos.com/legal/patents)**

AirPlay®, Apple Music™, FairPlay®, iPad®, iPhone®, iPod®, iTunes®, and OS X®, are trademarks of Apple Inc., registered in the U.S. and other countries.

"Made for iPod", "Made for iPhone", and "Made for iPad" mean that an electronic accessory has been designed to connect specifically to iPod, iPhone, or iPad, respectively, and has been certified by the developer to meet Apple performance standards. Apple is not responsible for the operation of this device or its compliance with safety and regulatory standards. Please note that the use of this accessory with iPod, iPhone, or iPad may affect wireless performance.

Windows® is a registered trademark of Microsoft Corporation in the United States and other countries.

Android™ is a trademark of Google, Inc.

Amazon, Kindle, Kindle Fire, the Amazon Kindle logo and the Kindle Fire logo are trademarks of Amazon.com, Inc. or its affiliates.

Sonos uses MSNTP software, which was developed by N.M. Maclaren at the University of Cambridge.

© Copyright, N.M. Maclaren, 1996, 1997, 2000; © Copyright, University of Cambridge, 1996, 1997, 2000.

All other products and services mentioned may be trademarks or service marks of their respective owners.

March 2017

©2004-2017 by Sonos, Inc. All rights reserved.

# Sonos PLAY:5 (gen 2)

The all-new PLAY:5® is the ultimate smart speaker for today's streaming universe—powerfully smart, fine-tuning its sound to bring you all the energy and emotion the artist packed into the original recording.

- Hardware and software custom-designed by Sonos to produce pure, immersive sound that's crystal clear at any volume.
- Powered by 3 tweeters and 3 mid-woofers, each with a dedicated amplifier, perfectly tuned to match the speakers and acoustic architecture.
- Works seamlessly with the complete range of Sonos products.

## New to Sonos?

It takes just a few steps to get Sonos up and running—simply follow the setup instructions packaged with your PLAY:5. Once you've got it set up, you can add additional Sonos products any time.

## Adding to an existing Sonos system?

Sonos can be easily expanded room by room. If you are adding this PLAY:5 to an existing Sonos system, see **Adding to an Existing Sonos System**.



# Your Home Network

To use the Sonos app, your device must be on the same network as Sonos. If you need help, please go to <http://faq.sonos.com/searching>.

## Requirements

To access music services, Internet radio, and music stored on your computer or Network-Attached Storage (NAS) device, make sure your network meets these requirements.

**Note:** Make sure your network has a high-speed Internet connection because Sonos is designed to provide you with free, online software updates. Your Sonos system must be registered to receive these updates so **be sure to register** during the setup process. We do not share your e-mail address with other companies.

- High-speed DSL/cable modem, or fiber-to-the-home broadband connection for proper playback of music services. (If your Internet service provider only offers satellite Internet access, you may experience playback issues due to fluctuating download rates.)
- If your modem isn't a modem/router combination and you want to take advantage of Sonos' automatic online updates or use a streaming music service, you'll need to install a wireless router before setting up Sonos.

**Note:** Sonos communicates over a 2.4GHz home network supporting 802.11 b/g/n wireless technology. 802.11n only network configurations are not supported—you can either change the router settings to 802.11 b/g/n or connect a Sonos product to your router.

- Connect a Sonos BOOST or speaker to your router if:
  - You have a larger home where the WiFi performance isn't reliable and you want to strengthen the wireless performance of your Sonos system.
  - Your WiFi network is already in high demand with streaming video and web surfing and you want to create a separate wireless network exclusively for your Sonos speakers.
  - Your network is 5GHz only (not switchable to 2.4GHz).
  - You have configured your router to support only 802.11n and can't change the settings to support 802.11 b/g/n.
- For best results, you should connect the computer or NAS drive that contains your personal music library collection to your network router using an Ethernet cable.

## The Sonos App

You can use the free Sonos app with any compatible device, including:

- **Sonos app (Android)**—Android 4.0 and higher; certain features require later versions. Touch the **Play Store** or **Market** button on your Android device to download the free Sonos app from Google Play.

- **Sonos app (iOS)**—iPhone, iPad and iPod touch running iOS 8.0 or later; certain features may require later versions.  
Touch the **App Store** button on your iPhone, iPod touch or iPad to download the free Sonos app, or download the application from iTunes®. (If you download from iTunes, you will need to sync before you see the Sonos logo display on your device.)
- **Sonos app (PC)**—Windows® 7 and higher; certain features require later versions.  
Download from our website at [www.sonos.com/support/downloads](http://www.sonos.com/support/downloads).
- **Sonos app (Mac)**—Macintosh® OS X 10.9 or later  
Download from our website at [www.sonos.com/support/downloads](http://www.sonos.com/support/downloads).

**Note:** Sonos CONTROL has been discontinued, but it's compatible with your new Sonos product.

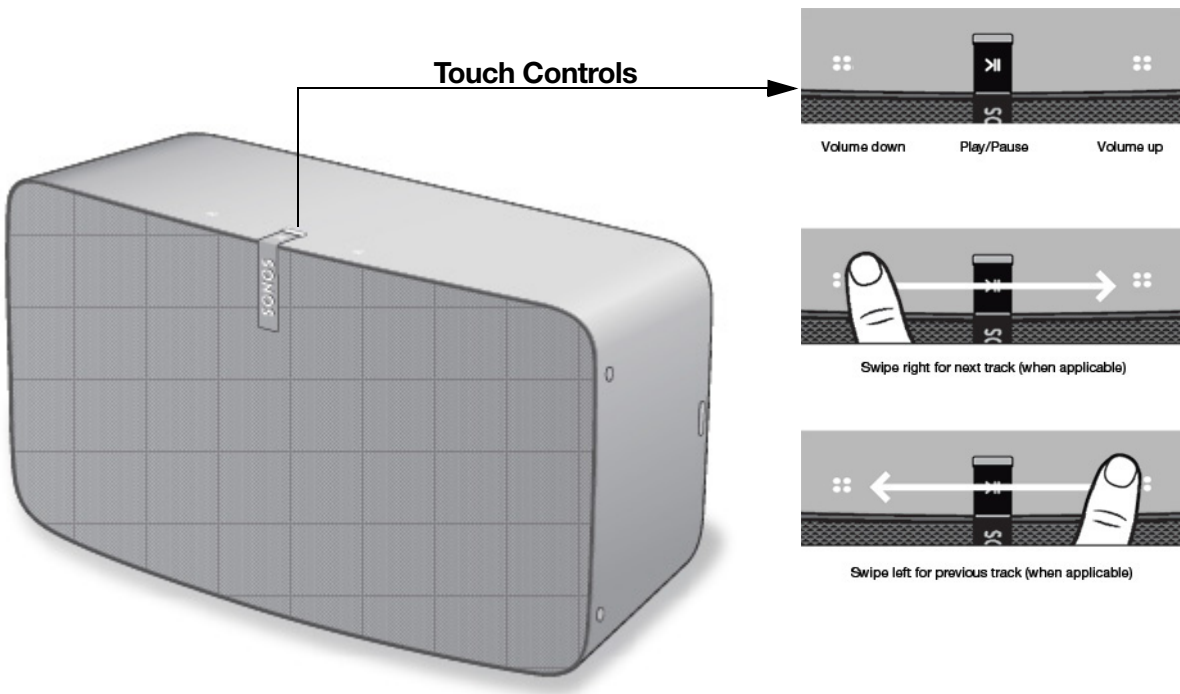
## Selecting a Location

The PLAY:5 is designed to produce great sound wherever it's placed. For maximum performance, we have a few guidelines:

- The PLAY:5 is a substantial and powerful speaker and should be placed on a flat surface that is robust and durable enough to properly support it. Make sure the PLAY:5's rubber feet sit completely on the flat surface.
- Allow at least 1" clearance all around the PLAY:5.
- For a single PLAY:5 speaker Sonos recommends positioning the speaker horizontally, enabling stereo sound over a wide sound stage. (A single PLAY:5 speaker positioned in vertical mode is a mono speaker—there is no stereo separation.)
- Place the PLAY:5 across the room from where you will be listening (at or close to your ear height for best results).
- For stereo pair placement information, see **Optimum stereo pair placement information**.

**Caution:** The PLAY:5 is humidity resistant so you can use it in the bathroom; however it is not water resistant so don't position it near water or leave it outside during a rain storm.

# PLAY:5 Front



**Note:** The Sonos PLAY:5's front grille is not removable. Tampering with the grille may result in damage to your PLAY:5.

## On/Off

Sonos is designed to be always on; the system uses minimal electricity whenever it is not playing music.

- To quickly stop streaming audio in all rooms, select **Pause All** from **Rooms** on a Sonos app.
- To stop streaming audio in one room, you can touch the **Play/Pause** button on the PLAY:5.

## Status indicator light

Indicates the current status. During normal operation the white light is dimly lit, brightening when touch controls are activated. If desired, you can turn off the white light from **Room Settings**.

See **Player Status Indicators** for a complete list of status indications.

## Play/Pause

Toggles between playing and pausing the audio (defaults to restarting the same music source when pressed unless a different source is selected). Touch to start or stop streaming audio.

**Volume up (+)**

When placed *horizontally*, the **Volume Up** touch control is on the right.  
When placed *vertically*, the **Volume Up** touch control is above the logo.

**Volume down (-)**

When placed *horizontally*, the **Volume Down** touch control is on the left.  
When placed *vertically*, the **Volume Down** touch control is below the logo.

*(Touch and hold for rapid volume change.)*

**Next track**

When placed *horizontally*, swipe from left to right between the touch controls to go to the next track.

When placed *vertically*, swipe up to go to the next track.

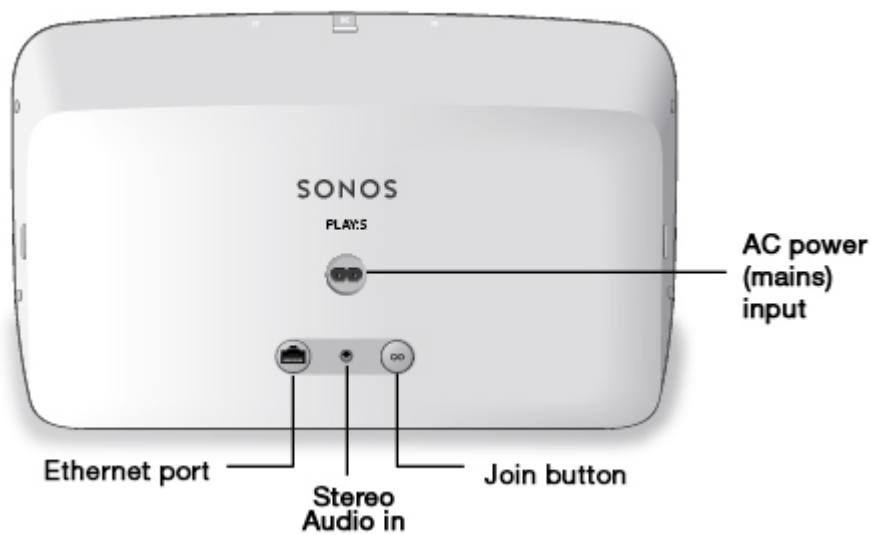
**Previous track**

When placed *horizontally*, swipe from right to left between the touch controls to go to the previous track.

When placed *vertically*, swipe down to go to the next track.

*(Next/Previous touch controls do not work when listening to a radio station.)*

## PLAY:5 Back



### Join button

Press the round **Join** button to connect the PLAY:5 to your Sonos system.

### Ethernet port

You can use an Ethernet cable to connect the PLAY:5 to your home network.

### AC power (mains) input (~100-240 V, 50-60 Hz)

Use only the supplied power cord to connect to a power outlet (using a third party power cord will void your warranty).

### 3.5mm (1/8") stereo audio in (2V)

#### Using Line-In:

To connect to a portable music player, use a 3.5mm to 3.5mm stereo audio cable to connect from the audio output on the device to the PLAY:5's audio input.

To connect an audio component such as a CD player, use a 3.5mm (1/8") mini-stereo to RCA audio cable. (Plug the mini-stereo end into the audio input on the PLAY:5 and plug the RCA end into the audio outputs on the audio component.)



## Adding to an Existing Sonos System

Once you've got Sonos set up, you can easily add more Sonos products any time (up to 32).

1. Select a location for your PLAY:5. (See **Selecting a Location** for optimal placement guidelines.)
2. Attach the power cord to the PLAY:5 and apply power. *Be sure to push the power cord firmly into the unit.*

**Note:** If you want to make a wired connection, connect a standard Ethernet cable from your router (or a live network wall plate if you have built-in wiring) to the Ethernet port on the back of the Sonos product.

3. Choose one of the following options:
  - Using the Sonos app on a mobile device: Select **Add a Player or SUB** from **Settings**.
  - Using the Sonos app on a Mac or PC: Select **Add a Player or SUB** from the **Manage** menu.

Thick walls, 2.4 GHz cordless telephones, or the presence of other wireless devices can interfere with or block the wireless network signals from Sonos. If you experience difficulty after positioning a Sonos product, try one or more of the following resolutions—relocate the Sonos product; change the wireless channel your music system is operating on; connect a Sonos product to your router if your setup is currently wireless.

## Tune Your Room with Trueplay™

Go ahead, put your Sonos speakers wherever you want. Trueplay listens to your room and tunes your speakers so you hear the sound you love, custom tuned to the room where you're listening (works on mobile devices running iOS 8 or later).

Choose **Settings** -> **Room Settings**. Pick a room and touch **Trueplay Tuning** to get started.

**Note:** Trueplay tuning is not available if VoiceOver is enabled on your iOS device. If you want to tune your speakers, first turn VoiceOver off on your device and then select **Settings** -> **Room Settings** from the Sonos app.

## Equalization Settings

The Sonos PLAY:5 ships with the equalization settings preset to provide the optimal playback experience. If desired, you can change the sound settings (bass, treble, balance, or loudness) to suit your personal preferences.

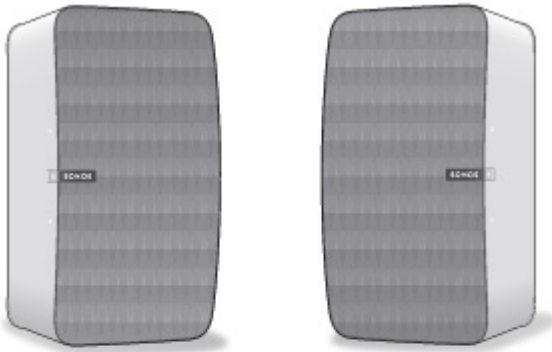
1. Select **Settings** -> **Room Settings**.
2. Touch to select a room.
3. Select **EQ**, and then drag your finger across the sliders to make adjustments.
4. To change the Loudness setting, touch **On** or **Off**. (The loudness setting boosts certain frequencies, including bass, to improve the sound at low volume.)

## Creating a Stereo Pair

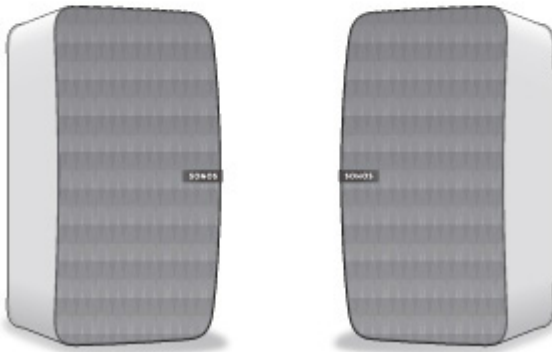
The stereo pair setting allows you to group two PLAY:1s, PLAY:3s or PLAY:5s in the same room to create a wider stereo experience. In this configuration, one unit serves as the left channel and the other serves as the right channel. You cannot create a mixed stereo pair—the Sonos products in the stereo pair must be the same.

### Optimum stereo pair placement information

- When creating a stereo pair, it is best to place the two Sonos speakers 8 to 10 feet away from each other.
- Your favorite listening position should be 8 to 12 feet from the paired Sonos products. Less distance will increase bass, more distance will improve stereo imaging.
- You can place them either horizontally or vertically—vertical works best when you sit in an optimized seat in the center between the speakers; horizontal works well when you want a great experience over a wider listening area, such as a couch. (Both speakers should be placed in the same orientation.)



- When placed vertically, **Volume Up** is above the logo; **Volume Down** is below the logo.
- When placed vertically, swipe up to go to the next track; swipe down to go to the next track.



**Note:** The stereo pair setting is for use with PLAY:1, PLAY:3 and PLAY:5 units only. You cannot create a mixed stereo pair—both Sonos products in the stereo pair must be the same.

## Using the Sonos app on a mobile device

1. Select **Settings** -> **Room Settings**.
2. Select a PLAY:5 to pair.
3. Select **Create Stereo Pair**, and follow the prompts to set up the stereo pair.

### To separate a stereo pair:

1. Select **Settings** -> **Room Settings**.
2. Select the stereo pair you wish to separate (the stereo pair appears with **L + R** in the room name.)
3. Select **Separate Stereo Pair**.

## Using the Sonos app on a Mac or PC

1. Choose one of the following:
  - Using your PC, select **Settings** from the **Manage** menu.
  - Using your Mac, select **Preferences** -> **Room Settings** from the **Sonos** menu.
2. Select a PLAY:5 you want to pair from the **Room Settings for** drop-down list.
3. Click **Create Stereo Pair** and follow the prompts to set up the stereo pair.

### To separate a stereo pair:

1. Choose one of the following:
  - Using your PC, select **Settings** from the **Manage** menu.
  - Using your Mac, select **Preferences** -> **Room Settings** from the **Sonos** menu.
2. Select the Sonos stereo pair you wish to separate from the **Room Settings for** drop-down (the stereo pair will appear with **L + R** in the room name).
3. On the **Basic** tab, click **Separate Stereo Pair**.

# Surround Speakers

## Adding Surround Speakers

You can easily pair two PLAY:1, PLAY:3 or PLAY:5 (gen2) speakers with a PLAYBAR to function as left and right surround channels in your Sonos surround sound experience. You can either configure surround speakers during the setup process, or follow the steps below to add them.

- Make sure the Sonos products are the same—you cannot combine a PLAY:1 and a PLAY:3 to function as surround speakers.
- Be sure to follow these instructions to set up your surround speakers. Do not create a room group or stereo pair as these will not achieve the left and right surround channel functionality.

## Using the Sonos app on a mobile device

1. From **Settings**, select **Room Settings**.
2. Select the room the PLAYBAR is located in.
3. Select **Add Surrounds**.
4. Follow the prompts to add first a left and then a right surround speaker.

## Removing surround speakers

1. From **Settings**, select **Room Settings**.
2. Select the room the surround speakers are associated with. The room name appears as *Room (+LS+RS)* on the **Room Settings** menu.
3. Select **Remove Surrounds**.
4. Select **Next** to drop the surround sound speakers from your surround system. If these were newly purchased PLAY:5s they will appear as **Unused** on **Rooms**. If these PLAY:5s existed in your household previously, they revert back to their previous state.

You can now move them to another room for individual use.

## Changing the surround settings

The default setting is determined by the calibration process. If you wish to make a change, you can follow the steps below.

1. From **Settings**, select **Room Settings**.
2. Select the room the PLAYBAR and surround speakers are located in. It appears as *Room (+LS+RS)* on the **Room Settings** menu.
3. Select **Advanced Audio** -> **Surround Settings**.
4. Choose one of the following:
  - **Surrounds**: Choose **On** or **Off** to turn the sound from the surround speakers on and off.
  - **TV Level**: Drag your finger across the slider to increase or decrease the volume of the surround speakers for playing TV audio.
  - **Music Level**: Drag your finger across the slider to increase or decrease the volume of the surround speakers for playing music.
  - **Music Playback**: Choose **Ambient** (default; subtle, ambient sound) or **Full** (enables louder, full range sound). This setting applies only to music playback, not TV audio.

## Using the Sonos app on a Mac or PC

1. Select **Manage** -> **Settings** (PC) or **Sonos** -> **Preferences** (Mac).
2. Select **Room Settings** if it is not already highlighted on the left.
3. From the **Basic** tab, select **Add Surrounds**.
4. Follow the prompts to add first a left and then a right surround speaker.

## Removing surround speakers

1. Select **Manage** -> **Settings** (PC) or **Sonos** -> **Preferences** (Mac).
2. Select **Room Settings** if it is not already highlighted on the left.
3. Choose the room the PLAYBAR is located in from the **Room Settings for** drop-down list. The room name appears as *Room (+LS+RS)*.
4. From the **Basic** tab, click **Remove Surrounds**. If these were newly purchased PLAY:5s, they will appear as **Unused** in the **Rooms** pane. If these PLAY:5s existed in your household previously, they revert back to their previous state.

## Changing the surround settings

The default setting is determined by the calibration process. If you wish to make a change, you can follow the steps below.

1. Select **Manage** -> **Settings** (PC) or **Sonos** -> **Preferences** (Mac).
2. Select **Room Settings** if it is not already highlighted on the left.
3. Choose the room the PLAYBAR and surround speakers are located in from the **Room Settings for** drop-down.
4. Select the **Surrounds** tab.
5. Choose one of the following:
  - **Surrounds:** Check to turn the sound from the surround speakers on; uncheck to turn it off.
  - **TV Level Adjustment:** Click and drag the slider to increase or decrease the volume of the surround speakers for playing TV audio.
  - **Music Level Adjustment:** Click and drag the slider to increase or decrease the volume of the surround speakers for playing music.
  - **Music Playback:** Choose **Ambient** (default; subtle, ambient sound) or **Full** (enables louder, full range sound). This setting applies only to music playback, not TV audio.

## Playing Music

Make a selection from the Menu on your mobile device or from the **MUSIC** pane on a Mac or PC.

### Radio

Sonos includes a radio guide that provides immediate access to over 100,000 free pre-loaded local and international radio stations, shows and podcasts streaming from every continent.

To select a radio station, simply select **Radio by TuneIn** and choose a station.

### Music services

A music service is an online music store or online service that sells audio on a subscription basis. Sonos is compatible with several music services—you can visit our website at [www.sonos.com/music](http://www.sonos.com/music) for the latest list. (Some music services may not be available in your country. Please check the individual music service's website for more information.)

If you are currently subscribed to a music service that's compatible with Sonos, simply add your music service user name and password information to Sonos as needed and you'll have instant access to the music service from your Sonos system.

1. To add a music service, touch **Add Music Services** from the Menu.
2. Select the music service you would like to add.
3. Select **Add to Sonos**, and then follow the on-screen prompts. Your login and password will be verified with the music service. As soon as your credentials have been verified, the music service displays on the Menu.



Free music service trials are available in some countries. (Please check the individual music service's website for more information.) If there is a music service trial visible on the **Music Services** menu, simply touch it to select. Touch **Add to Sonos** -> **I'm new to [music service]**, and then follow the prompts to activate the music trial. After the trial period is up, you will need to subscribe to the music service to keep the music playing.

## Local music library

Sonos can play music from any computer or network-attached storage (NAS) device on your home network where you have shared music folders (up to 65,000 songs). During the setup process, you are guided through the process of accessing your local music library (such as your iTunes library). Over time, you may wish to add or remove folders from this list.

**Note:** We recommend using the Sonos app for Mac or PC to add shared folders. For more information, please visit our website at <http://faq.sonos.com/manage>.

To make changes to your local library using a mobile device, go to **Settings** and choose one of the following options:

- To add a music folder, select **Music Library Setup** and:
  - Touch  -> **Add New Share** (iOS).
  - Touch **Add New Share** (Android).
- To remove a music folder, select **Music Library Setup** and:
  - Touch  next to the folder you wish to remove (iOS).
  - Touch the folder and select **Remove Share** (Android).

Sonos indexes your local music so you can view your music collection by categories (such as artists, albums, composers, genres, or songs.) If you add new music, simply update your music index to add this music to your Sonos music library.

- To update your music library, select **Manage Music Library** -> **Update Music Index Now**. If you'd like your music library to update automatically each day, select **Schedule Music Index Updates** and then select an update time.

## Playing music from your mobile device

You can play music and podcasts stored on any mobile device that's on the same network as Sonos. Just choose **On this [mobile device]** from the Menu.

### Google Play Music (Android devices)

You can play music to Sonos directly from the Google Play Music app on any Android device. This feature is available for both Standard and All Access Google Play Music customers.

To play music directly from the Google Play Music app to Sonos, you must have both the Google Play Music app and the Sonos app installed on your mobile device.

Simply open the Google Play Music app and connect to a Sonos room or room group to start the music.

## Control Sonos from your Spotify app

You can always play Spotify from the Sonos app. Now you can control Sonos directly from your Spotify app too (Spotify premium subscribers only).

While you're listening to music in the Spotify app, select **DEVICES AVAILABLE** to connect to a Sonos room or room group.

To use this feature you need to have a Sonos account. If you don't have one, choose one of the following options:

- On a mobile device: Go to **Settings** -> **Advanced Settings** and choose **Control Sonos from Spotify**.
- On a PC: Go to **Manage** -> **Settings** and choose **Advanced**. From the **Music Sources** tab, choose **Control Sonos from Spotify**.
- On a Mac: Go to **Sonos** -> **Preferences** and select **Advanced**. From the **Music Sources** tab, choose **Control Sonos from Spotify**.

## Using Line-In

You can connect an external source like a portable music player to any Sonos player that has a line-in connection. The source will be automatically detected as soon as you plug it in.

**To a portable music player:** Connect a 3.5mm to 3.5mm stereo audio cable from the portable device's audio output to the PLAY:5's audio input.

**To an external source like a CD player:** Use a 1/8" (3.5mm) mini-stereo to RCA audio cable—plug the mini-stereo end into the PLAY:5, and plug the RCA end into the external source's audio outputs.

### Playing music

**Using a mobile device:** Touch **Line-In** from the Menu and choose the line-in device.

**Using a Mac or PC:** Choose **Line-In** from the **MUSIC** pane. Click ▼ next to the music source and choose **Play Now**.

### Changing the settings

**Using a mobile device:** Go to **Settings** and choose **Room Settings**. Choose the Sonos speaker the source is connected to and touch **Line-In**.

**Using a Mac or PC:** Go to **Manage** -> **Settings** (PC) or **Sonos** -> **Preferences** -> **Room Settings** (Mac). Choose the Sonos speaker the source is connected to from the **Room Settings for** drop-down and click the **Line-In** tab.

#### Settings:

- **Line-In Source Name:** Choose a name from the list.
- **Line-In Source Level:** A default (typical) line-in source level is automatically assigned for each source. If the volume sounds too low, you can choose a higher line level. (You may experience clipping at higher volume levels if you set the level too high.)
- **Autoplay Room:** Choose the room you want this line-in source to play in whenever it's connected to Sonos.

- **Include Grouped Rooms:** Turn on if you want the line-in source to play in rooms that are grouped with the autoplay room.
- **Use Autoplay Volume:** Click the **Use Autoplay Volume** box if you want to use the external source to adjust the volume in the autoplay room. Use the slider to set a default volume.

## I have a new router

If you purchase a new router or change your ISP (Internet service provider), you will need to restart all your Sonos products after the router is installed.

**Note:** If the ISP technician connects a Sonos product to the new router, you only need to restart your wireless Sonos products.

1. Disconnect the power cord from all of your Sonos products for at least 5 seconds.
2. Reconnect them one at a time, starting with the Sonos product that is connected to your router (if one is usually connected).

Wait for your Sonos products to restart. The status indicator light will change to solid white on each product when the restart is complete.

**If your Sonos setup is completely wireless** (you don't keep a Sonos product connected to your router), you will also need to change your wireless network password. Follow the steps below:

1. Temporarily connect one of your Sonos players to the new router with an Ethernet cable.
2. Select **Advanced Settings** -> **Wireless Setup** from the **Settings** menu.  
Sonos will detect your network.
3. Enter the password for your wireless network.
4. Once the password is accepted, unplug the player from your router and move it back to its original location.

## I want to change my wireless network password

If your Sonos system is set up wirelessly and you change your wireless network password, you will also need to change it on your Sonos system.

1. Temporarily connect one of your Sonos players to your router with an Ethernet cable.
2. Choose one of the following options:
  - Using the Sonos app on a mobile device, select **Settings** -> **Advanced Settings** -> **Wireless Setup**.
  - Using the Sonos app on a PC, select **Settings** -> **Advanced** from the **Manage** menu. On the **General** tab, select **Wireless Setup**.
  - Using the Sonos app on a Mac, select **Preferences** -> **Advanced** from the **Sonos** menu. On the **General** tab, select **Wireless Setup**.
3. Enter the new wireless network password when prompted.
4. Once the password is accepted, you can unplug the player from your router and move it back to its original location.




## Player Status Indicators

Indicator Lights	Status	Sonos Product	Additional Information
Flashing white	Powering up	BRIDGE, BOOST, CONNECT, SUB, CONNECT:AMP, DOCK, PLAY:1, PLAY:3, PLAY:5, PLAYBAR, PLAYBASE	
Solid white ( <i>dimly lit</i> )	Powered up and associated with a Sonos system (normal operation)	BRIDGE, BOOST, CONNECT, SUB, CONNECT:AMP, DOCK, PLAY:1, PLAY:3, PLAY:5, PLAYBAR, PLAYBASE	You can turn the white status indicator light on or off from <b>Room Settings</b> . (Sonos products that are paired together share the same setting.)
Solid white ( <i>brightly lit</i> )	Touch control(s) active	PLAY:5 (gen2), PLAYBASE	Brightens when touch controls are activated.
Flashing green	Powered up, not yet associated with a Sonos system <i>Or,</i> WAC (wireless access configuration) join ready	BRIDGE, BOOST, CONNECT, SUB, CONNECT:AMP, DOCK, PLAY:1, PLAY:3, PLAY:5, PLAYBAR, PLAYBASE	For a SUB, this may indicate the SUB is not yet paired with a speaker.
Slowly flashing green	Surround audio is off or SUB audio is off	PLAY:1, PLAY:3, PLAY:5 (gen2), SUB	Applicable for speaker configured as a surround speaker, or for a SUB paired with a PLAYBAR.
Solid green	Volume set to zero or muted	CONNECT, CONNECT:AMP, PLAY:1, PLAY:3, PLAY:5, PLAYBAR, PLAYBASE	
Flashing orange	During SonosNet setup, this occurs after a button press while the product is searching for a household to join.	BRIDGE, BOOST, CONNECT, SUB, CONNECT:AMP, DOCK, PLAY:1, PLAY:3, PLAY:5, PLAYBAR, PLAYBASE	

Indicator Lights	Status	Sonos Product	Additional Information
Rapidly flashing orange	Playback / Next Song failed	CONNECT, CONNECT:AMP, PLAY:1, PLAY:3, PLAY:5, PLAYBAR, PLAYBASE	Indicates either playback or next song was not possible.
Solid orange	During wireless setup, this occurs while the Sonos open access point is temporarily active. If you are not setting up Sonos, this may indicate warning mode.	CONNECT, SUB, CONNECT:AMP, PLAY:1, PLAY:3, PLAY:5, PLAYBAR, PLAYBASE	If the orange light is on AND the speaker's volume level automatically reduces, this indicates the speaker is in warning mode. <ul style="list-style-type: none"> <li>• Press the <b>Pause</b> button to stop the audio.</li> <li>• For Sonos products with a vent opening (SUB, CONNECT:AMP), check to make sure it's not blocked.</li> <li>• Check the room temperature to make sure it's less than 104°F/ 40° C.</li> <li>• If the speaker is in direct sunlight, provide shade.</li> <li>• Allow the speaker to cool for several minutes and then press <b>Play</b> to restart the audio.</li> <li>• If the problem does not resolve, please contact Customer Care.</li> </ul>
Flashing green and white	Speakers are being linked to your Sonos account.	BRIDGE, BOOST, CONNECT, SUB, CONNECT:AMP, DOCK, PLAY:1, PLAY:3, PLAY:5, PLAYBAR, PLAYBASE	Link the speaker(s) to your account. For more information, see <a href="http://faq.sonos.com/accountlink">http://faq.sonos.com/accountlink</a> .
Flashing red and white	Speaker repartitioning failed.	BRIDGE, BOOST, CONNECT, SUB, CONNECT:AMP, DOCK, PLAY:1, PLAY:3, PLAY:5, PLAYBAR, PLAYBASE	Please contact Customer Care.
Flashing red	Speaker setup timed out. This happens if a speaker is plugged in for 30 minutes without being set up.	CONNECT, SUB, CONNECT:AMP, PLAY:1, PLAY:3, PLAY:5, PLAYBAR, PLAYBASE	Unplug the speaker, wait 10 seconds, plug it back in, and set it up.

# Important Safety Instructions

1. Read these instructions.
2. Keep these instructions.
3. Heed all warnings.
4. Follow all instructions.
5. Do not use this apparatus near water.
6. Clean only with dry soft cloth. Household cleaners or solvents can damage the finish on your Sonos components.
7. Do not block any ventilation openings. Install in accordance with the manufacturer's instructions.
8. Do not install near any heat sources such as radiators, heat registers, stoves, or other apparatus that produce heat.
9. Protect the power cable from being walked on or pinched, particularly at plugs, convenience receptacles, and the point where they exit from the apparatus.
10. Only use attachments/accessories specified by the manufacturer.
11. Unplug this apparatus during lightning storms or when unused for long periods of time.
12. Refer all servicing to Sonos qualified service personnel. Servicing is required when the apparatus has been damaged in any way, such as power-supply cable or plug is damaged, liquid has been spilled or objects have fallen into the apparatus, the apparatus has been exposed to rain or moisture, does not operate normally, or has been dropped.
13. The Mains plug should be readily available to disconnect the equipment.
-  **14. Warning:** To reduce the risk of fire or electric shock, do not expose this apparatus to rain or moisture.
15. Do not expose apparatus to dripping or splashing and do not place objects filled with liquids, such as vases, on the apparatus.

# Specifications

Feature	Description
<b>Audio</b>	<b>Hardware and software custom-designed by Sonos to produce pure, immersive sound that's crystal clear at any volume.</b>
<b>Speakers</b>	Six driver speaker system—three 10cm mid-woofers, two 20mm tweeters and one 23mm center tweeter, each with a dedicated amplifier, designed in-house and perfectly tuned to match the speakers and acoustic architecture.
<b>Stereo Pair</b>	Turn two PLAY:5s into separate left and right channel speakers to create wider, bigger deeper sound.
<b>5.1 Home Theater</b>	Add two PLAY:5 speakers to a PLAYBAR and SUB for a true surround sound experience.
<b>Music</b>	
<b>Audio Formats Supported</b>	Support for compressed MP3, AAC (without DRM), WMA without DRM (including purchased Windows Media downloads), AAC (MPEG4), AAC+, Ogg Vorbis, Apple Lossless, Flac (lossless) music files, as well as uncompressed WAV and AIFF files. Native support for 44.1kHz sample rates. Additional support for 48kHz, 32kHz, 24kHz, 22kHz, 16kHz, 11kHz, and 8kHz sample rates. MP3 supports all rates except 11kHz and 8kHz. <b>Note:</b> Apple “Fairplay”, WMA DRM and WMA Lossless formats not currently supported. Previously purchased Apple “Fairplay” DRM-protected songs may be upgraded.
<b>Music Services Supported</b>	Sonos works seamlessly with most music services, including Apple Music™, Deezer, Google Play Music, Pandora, Spotify and Radio by Tuneln, as well as downloads from any service offering DRM-free tracks. Service availability varies by region. For a complete list, see <a href="http://www.sonos.com/music">http://www.sonos.com/music</a> .
<b>Internet Radio Supported</b>	Streaming MP3, HLS/AAC, WMA
<b>Album Art Supported</b>	JPEG, PNG, BMP, GIF
<b>Playlists Supported</b>	Napster, iTunes, WinAmp, and Windows Media Player (.m3u, .pls, .wpl)
<b>Networking*</b>	
<b>Wireless Connectivity</b>	Connects to your home WiFi network with any 802.11 b/g/n router. 802.11n only network configurations are not supported—you can either change the router settings to 802.11 b/g/n or connect a Sonos product to your router.
<b>SonosNet™ Extender</b>	Functions to extend and enhance the power of SonosNet, a secure AES encrypted, peer-to-peer wireless mesh network dedicated exclusively for Sonos to reduce WiFi interference.
<b>Ethernet Port</b>	One 10/100 Mbps Ethernet port

Feature	Description
<b>Internet connectivity</b>	Internet connection required for access to Internet radio stations, online music services and software updates. (DSL, cable modem or LAN-based high-speed Internet connection required.) Internet functionality may require payment of separate fee to a service provider; local and/or long distance telephone charges may apply.
<b>General</b>	
<b>Power Supply</b>	AC 100 - 240 V~, 50/60 Hz, 2.3A, universal input
<b>Controls</b>	Volume +/-, Play/Pause, Next Track, Previous Track; swipe horizontally across the touch controls to skip to next track or previous track.
<b>Status Indicator</b>	Light indicates PLAY:5 status
<b>Audio Line-In</b>	Auto-detecting 3.5mm audio line-in connection
<b>Dimensions (H x W x D)</b>	14.33 (w) x 8.03 (h) x 6.06 (d) in. / 364 (w) x 203 (h) x 154 (d) mm
<b>Weight</b>	14 lb / 6.36 kg
<b>Threaded Mount</b>	None
<b>Operating Temperature</b>	32° to 104° F (0° to 40° C)
<b>Storage Temperature</b>	4° to 158° F (-20° to 70° C)
<b>Humidity Resistant</b>	Designed to withstand high humidity, such as in a bathroom with a running shower, but the PLAY:5 is not waterproof or water resistant.
<b>Product Finish</b>	White matte or black matte exposure, graphite grille
<b>Package Contents</b>	PLAY:5, power cord, Ethernet cable, QuickStart Guide, and Legal booklet

\* Specifications subject to change without notice.

## Need More Help?

- Visit our Frequently Asked Questions (FAQ) pages at [www.sonos.com/support](http://www.sonos.com/support).
- Ask us a question at <http://www.sonos.com/emailsupport>.

## Product Guide Feedback?

We'd love to hear from you! We'll read your feedback carefully and use it to help us improve our product guides. Write to us at: [docfeedback@sonos.com](mailto:docfeedback@sonos.com)

If you're having a problem with your Sonos system, please contact Customer Care so they can help. Email them at <http://www.sonos.com/emailsupport>.